



performance advantage sportswear

High Performance Lycra* Sportsuits

for WOMEN playing BASKETBALL, TOUCH and VOLLEYBALL
DESIGNED AND MADE IN AUSTRALIA
All prices include GST - **July 2003**

Contact us NOW!

www.softedges.com
sales@softedges.com
freecall: 1800 858 008
fax: (02) 6584 9405

Soft Edges' high performance Lycra sportsuits are all-in-one Lycra garment, lined with moisture management Lycra lining. They fit like a second skin, and through the benefits of the remarkable 2 way stretch Lycra fabric, offer players performance advantages over similar loose fitting garments – total freedom of movement, feel the same wet or dry, graze protection for upper thighs, and no loose clothing for opponents to grab or phantom touches.

Prices will be quoted on request as discounts are calculated for bulk.

They do not include:

- Cost of prints: add \$4.60 for each one colour print, \$7.20 for 2 colours, \$9.80 for 3 colours (check with us for more colours/prints). Discounts apply for more than 20 prints.
- Numbers: add \$4.70 for transfer numbers or white printed numbers
add \$5.50 for coloured printed numbers
size: Back of top - 200mm / 150mm for girls sizes and muscle backs
Front of top – 100mm
- Names: add \$11.55 for a 5cm high name on the back in black or white only
- Screens for printing: add \$39.85 /screen, one for each colour in a logo.
- We do not keep screens – if we printed your logo before re-screening cost is \$31.35 /screen.
- Artwork: if required, add \$46.65 /hour
- Freight: charged at cost

Surcharges: For top up orders or orders of less than 10 units, the following scale of surcharge applies:

- 1 – 2 units 50%
- 3 – 4 units 40%
- 5 – 6 units 30%
- 7 – 8 units 20%
- 9 units 10%

Custom made styles: We will make your design in your colours. If the styles shown don't suit your needs we will work with you on your design and will quote you the price when we have worked it out with you. Pattern fees may apply.

Linings: Sportsuits are lined with a moisture management fabric which draws moisture away from the skin, so uniforms feel the same wet or dry and help the players to feel cooler.

- Womens - Prices reflect fully lined option and unlined option
- Womens - Top front & back lining \$12.65
- Womens - Top front only \$7.15
- Girls – Top front only \$6.05



performance advantage sportswear

High Performance Lycra* Sportsuits

Contact us NOW!

www.softedges.com
sales@softedges.com
freecall: 1800 858 008
fax: (02) 6584 9405

for WOMEN playing BASKETBALL, TOUCH and VOLLEYBALL
DESIGNED AND MADE IN AUSTRALIA
All prices include GST - **July 2003**

Sizes: Women W8 – W16 (18 and above + 10%)
Girls G6 – G14

Size adjustments: We understand that not all players are the same build and some need a different size top and pant in their sportsuit. We can make these adjustments (size splitting) it costs \$7.50 per garment.

Other size adjustments listed below:

- L + 2cm to leg length add \$4.40
- XL + 2cm to torso add \$4.40
- XXL + 2cm to leg length and torso add \$7.50
- XS - 2cm from torso add \$4.40

Sizing samples are available on request

Payment terms: When we have worked out all details of your order with you, we will confirm them in writing, including the cost and delivery date

- Deposit of 1/3 will be required with your order confirmation
- Balance payable before the order leaves our factory
- For schools, national and state bodies: no deposit, net 7 days.

Delivery: will be confirmed after your order is placed. Please allow 4-6 weeks from when your order is placed for delivery. Production time is allocated when your order is placed, and is strictly in order of receipt.

Please allow 4 – 6 weeks for delivery from receipt of complete order!

*Production time is allocated when your order is placed,
and is strictly in order of receipt.*

Phone freecall 1800 858 008 for help, information and advice!

*The prices shown in this brochure include GST, but the prices for the suits do not include the cost of prints or numbers. The styles shown are house designs which have been developed in response to customers' requests. Not all our styles are shown, due to space limitations. Please ask if you have a style in mind which is not shown here, whether it is for a design you have seen before, or a new one.



Coast 2 Coast
John Davidson – CEO
1800 064 277 fax (02) 6581 0455
www.coast2coastsports.com.au

Looking for tracksuits, polo shirts or non-stretch uniforms! – We know and recommend our friends in business,
Coast 2 Coast Sports



performance advantage sportswear

High Performance Lycra* Sportsuits

Contact us NOW!

www.softedges.com

sales@softedges.com

freecall: 1800 858 008

fax: (02) 6584 9405

for WOMEN playing BASKETBALL, TOUCH and VOLLEYBALL
DESIGNED AND MADE IN AUSTRALIA

All prices include GST - July 2003



8831



8836



8845



8891

Binding around the neck and armholes



8815



8844



8844R



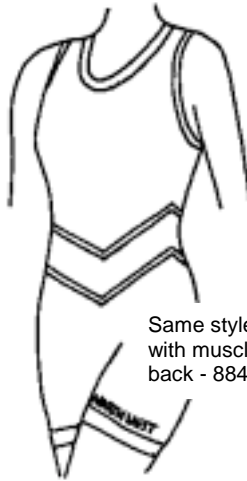
8879



8838



8894



8839

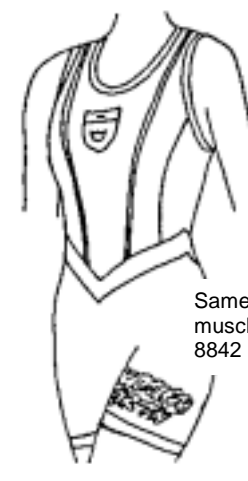
Same style with muscle back - 8846



8887



8887M



8742

Same style with muscle back - 8842



performance advantage sportswear

Contact us NOW!

www.softedges.com
sales@softedges.com
freecall: 1800 858 008
fax: (02) 6584 9405

High Performance Lycra* Sportsuits

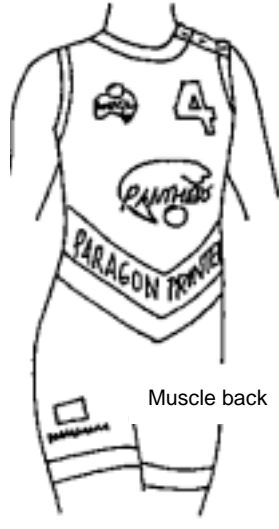
for WOMEN playing BASKETBALL, TOUCH and VOLLEYBALL
DESIGNED AND MADE IN AUSTRALIA

All prices include GST - July 2003

High neck, button shoulder

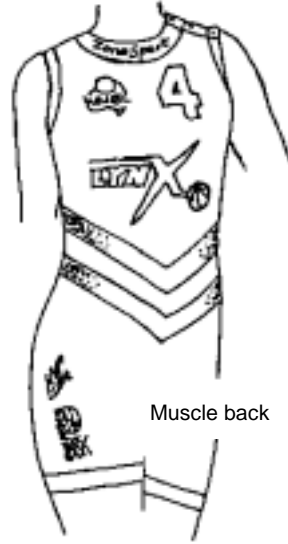


8858



Muscle back

8864R



Muscle back

8864M



Muscle back

8864



Muscle back

8871



8794



8795



8893V



8875 - Crew neck



8863

Prices shown do not include the prints shown on the drawings



performance advantage sportswear

High Performance Lycra* Sportsuits

Contact us NOW!

www.softedges.com
 sales@softedges.com
 freecall: 1800 858 008
 fax: (02) 6584 9405

for Girls: sizes G6 - G14
 playing BASKETBALL, TOUCH and VOLLEYBALL
 DESIGNED AND MADE IN AUSTRALIA
 All prices include GST - July 2003



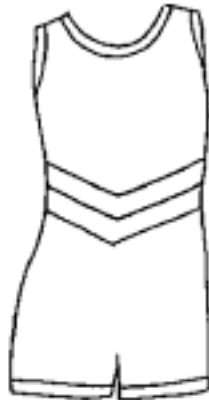
8845



8847



8847M



8843



8844



8826

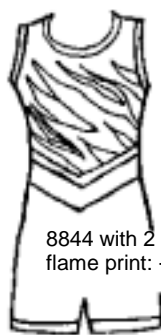


8842

Options – these are house prints, so there is no charge for screens. They are available on any suitable style, not just those illustrated – the only limitations are your imagination and our ability to carry out your requirements



8815, stripes matching front and back + \$ 9.20



8844 with 2 or 3 colour flame print: + \$7.20 or \$9.80



8831 with 2 colour print + \$7.20



8839 with double arm and leg bands + \$7.40



8845 with 2 colour claw print on top and pant + \$14.40 (you could have one + \$7.20)



8845 with 2 colour star print +\$7.20, looks great on leg too



8845 with 2 claw prints + \$9.20 , could have 1 on top and 1 on leg, or just have one + \$4.40



Name of team:						Date:
Style number:						
Lining:	full	top front and back lining			front only	
Do you have sew on patches?		Yes		No	Where on the suits?	

Tick the boxes and draw in the details, then fax to Soft Edges on (02) 6584 9405

Artwork for prints should be submitted along with these two pages or emailed to sales@softedges.com

FRONT



Neckline shaping	
<input type="checkbox"/>	V neck with buttons
<input type="checkbox"/>	V neck
<input type="checkbox"/>	High with buttons
<input type="checkbox"/>	Scoop neck

Neck and armhole finishes	
<input type="checkbox"/>	Bands
<input type="checkbox"/>	Colours

Numbers on the back	
<input type="checkbox"/>	Yes
<input type="checkbox"/>	No
<input type="checkbox"/>	colour
<input type="checkbox"/>	Size

Numbers on the front	
<input type="checkbox"/>	Yes
<input type="checkbox"/>	No
<input type="checkbox"/>	colour
<input type="checkbox"/>	Size

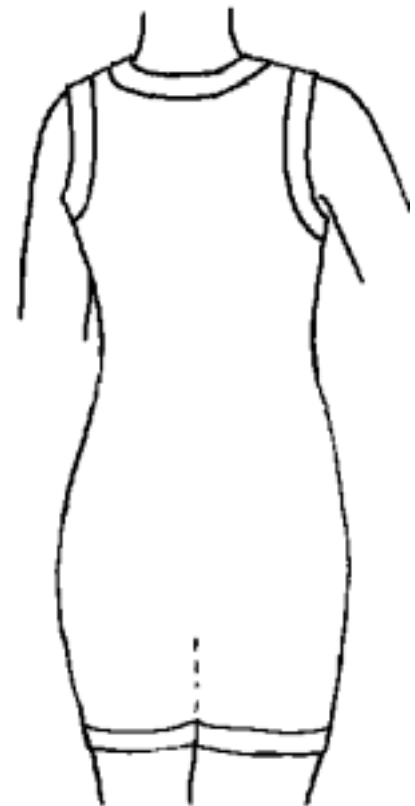
Logos	
<input type="checkbox"/>	Back logo
<input type="checkbox"/>	Chest logo
<input type="checkbox"/>	Midriff logo
<input type="checkbox"/>	Leg logos

Midriff treatment	
<input type="checkbox"/>	Vs
<input type="checkbox"/>	Diagonal splice
<input type="checkbox"/>	Colours

Fabric colours	
<input type="checkbox"/>	Top
<input type="checkbox"/>	Pant
<input type="checkbox"/>	Leg bands

BACK

<input type="checkbox"/>	Names above number
<input type="checkbox"/>	Names below number



*Lycra – DuPont registered trademark

Soft Edges' performance advantage basketball uniforms: sportsuits with nylon Lycra outer shell, moisture management lining, grip elastic in leg bands – a second skin uniform to help you play your best.*

